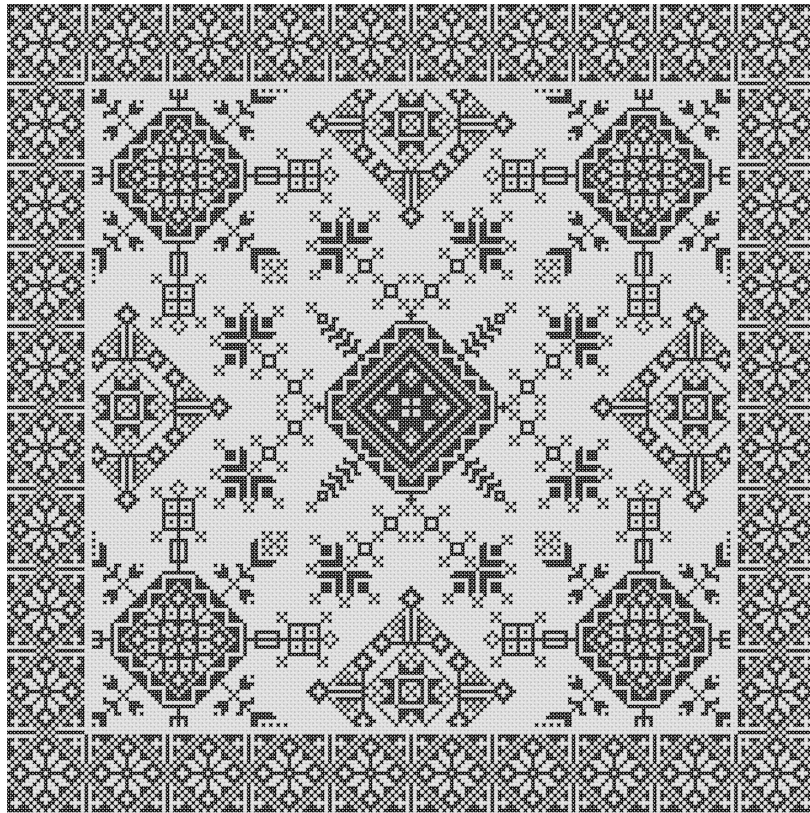


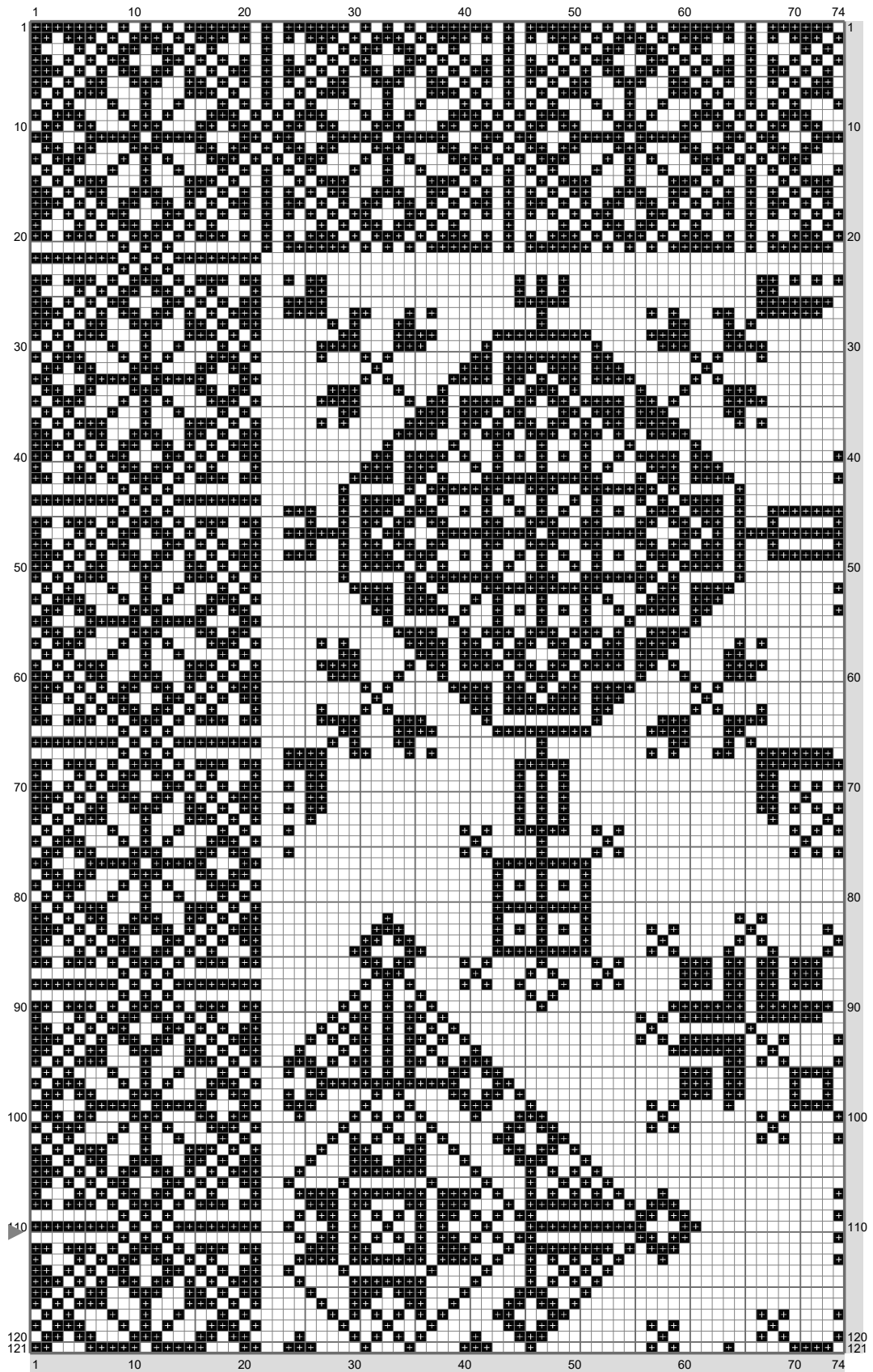
Svartsaum Duk Mønster

Copyright (C) 2017 Elise Nielsen



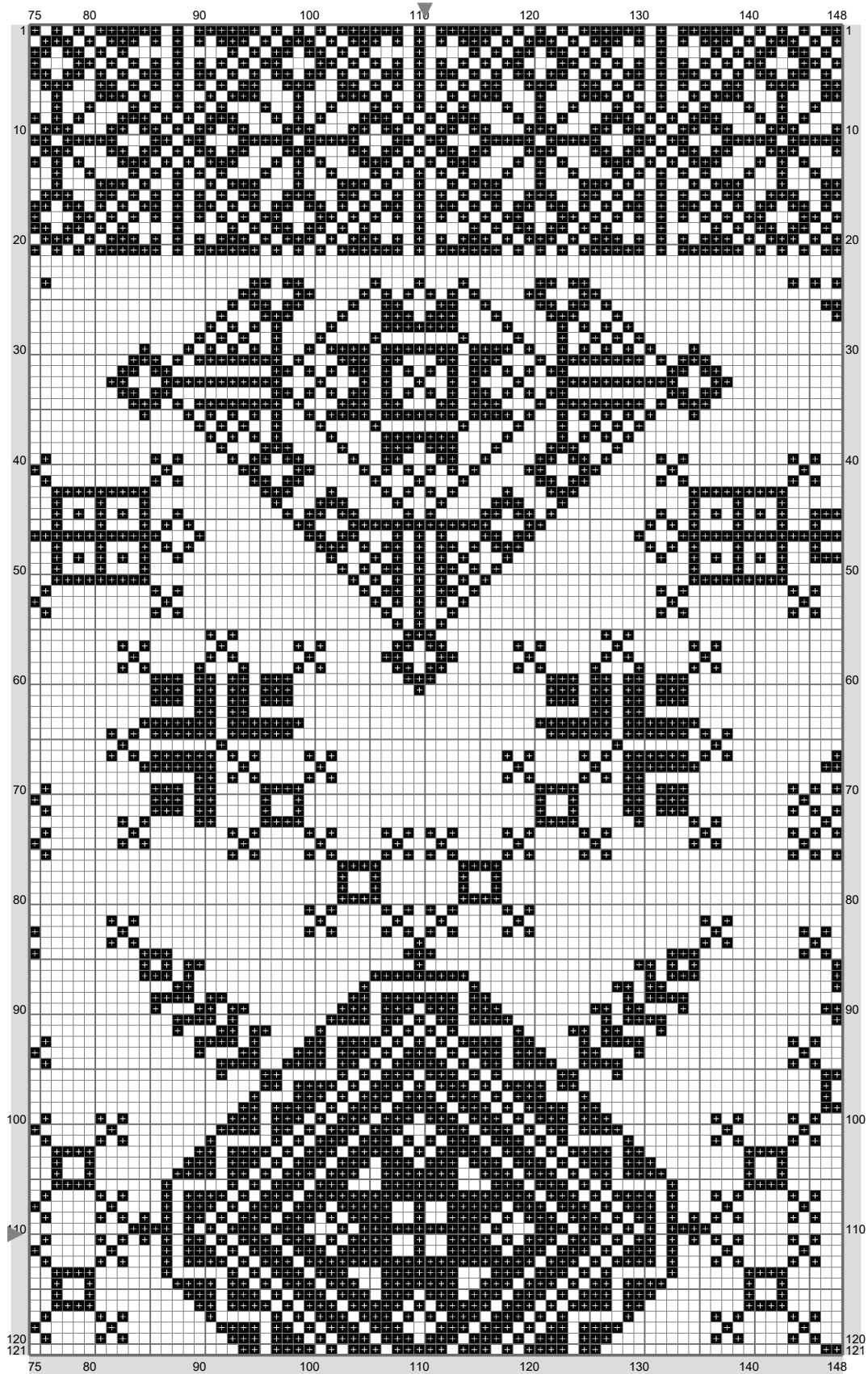
Svartsaum Duk Mønster

Copyright (C) 2017 Elise Nielsen



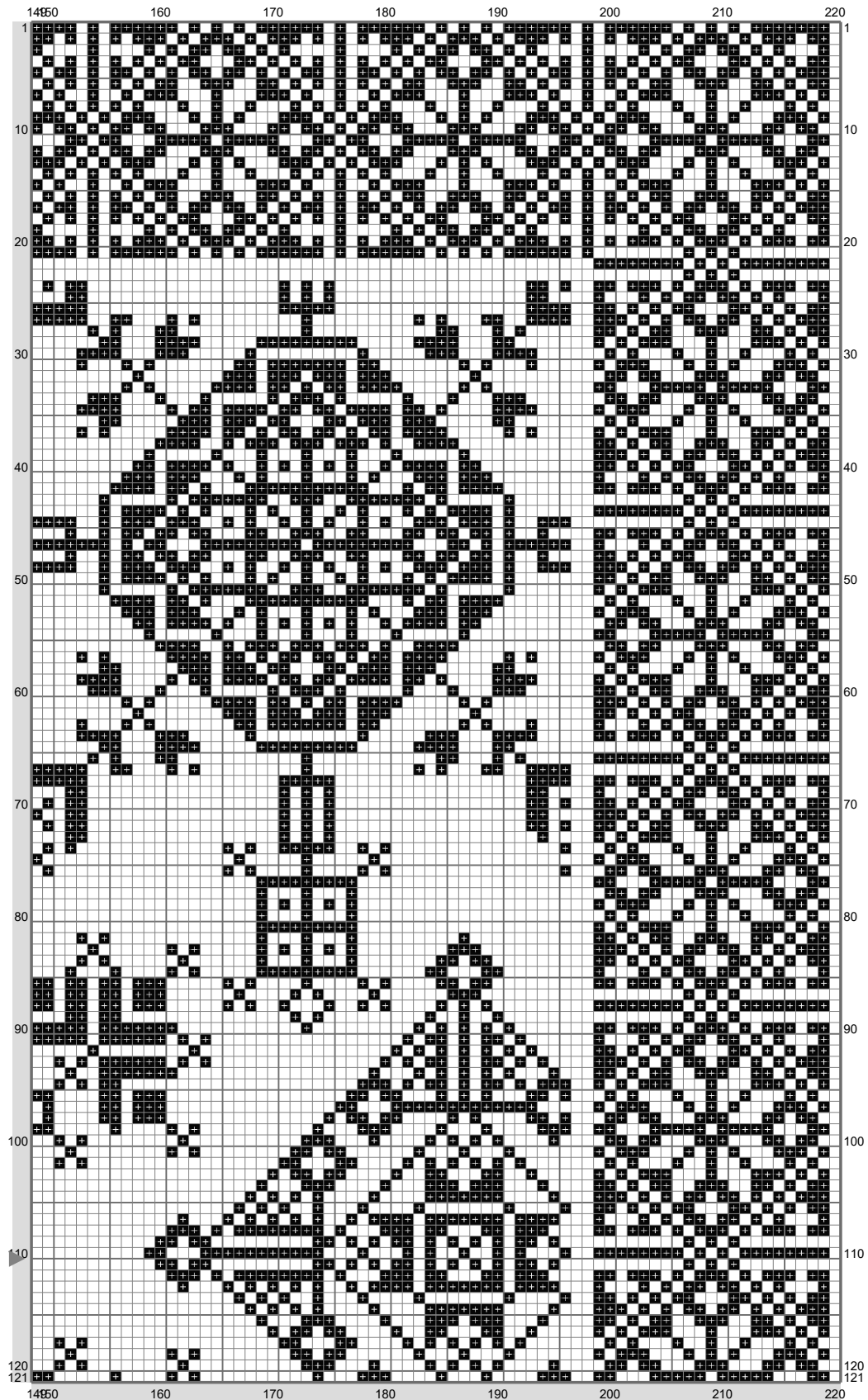
Svartsaum Duk Mønster

Copyright (C) 2017 Elise Nielsen



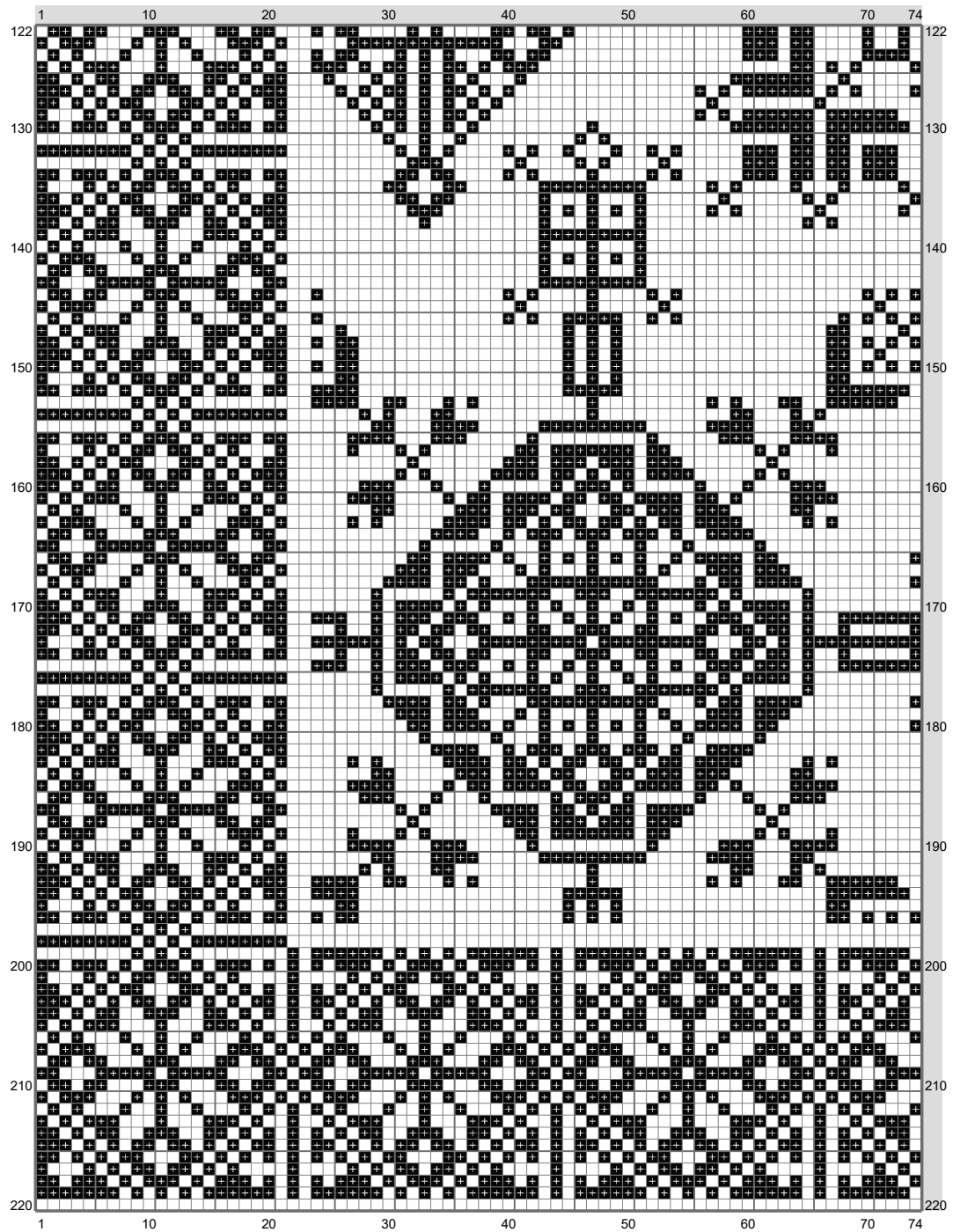
Svartsaum Duk Mønster

Copyright (C) 2017 Elise Nielsen



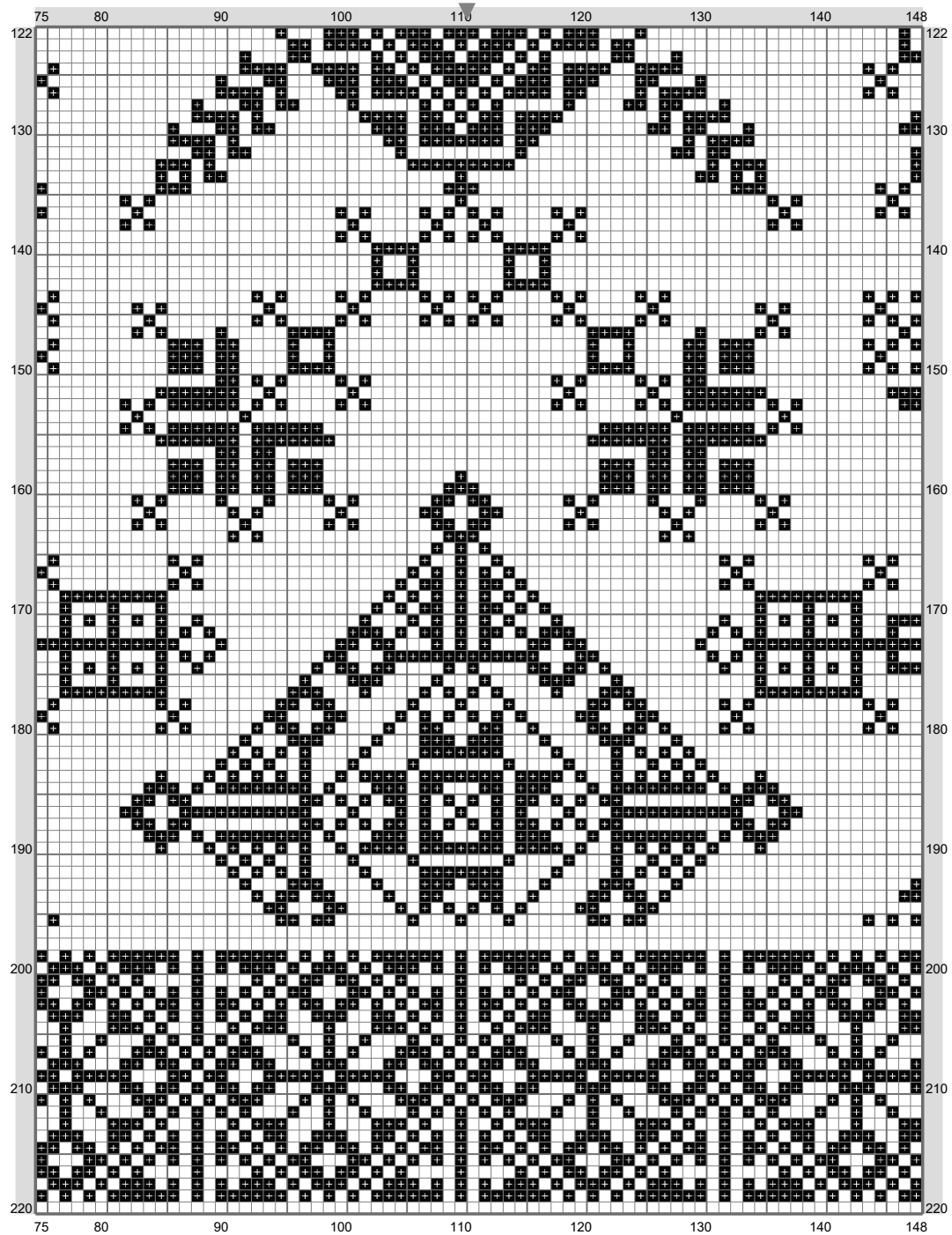
Svartsaum Duk Mønster

Copyright (C) 2017 Elise Nielsen



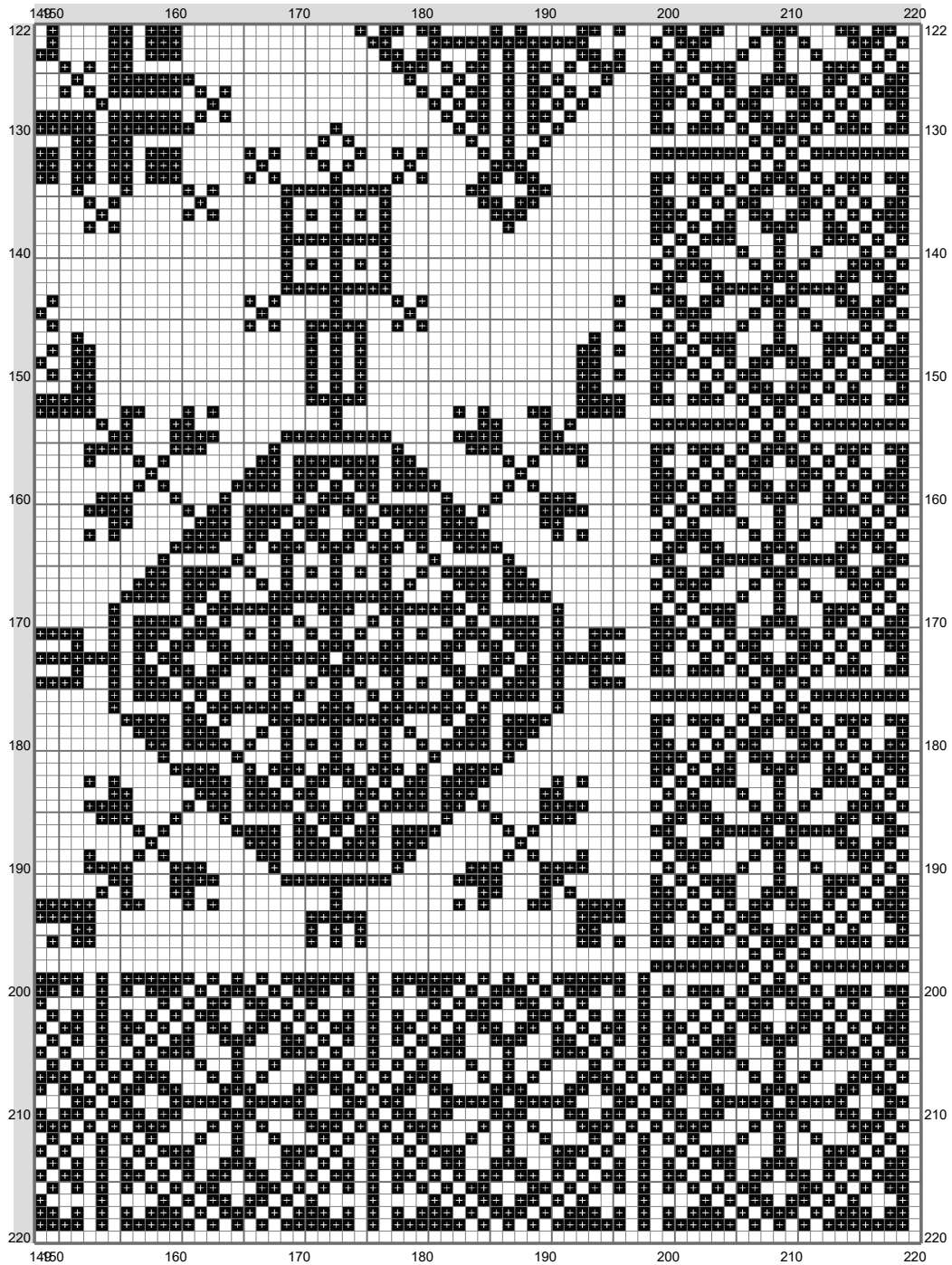
Svartsaum Duk Mønster

Copyright (C) 2017 Elise Nielsen



Svartsaum Duk Mønster

Copyright (C) 2017 Elise Nielsen



Svartsaum Duk Mønster

Copyright (C) 2017 Elise Nielsen

Stitch Count: 220w x 220h

Finished Size: 50.8 cm x 50.8 cm (22 ct./inch)

Cloth: Aida

Cloth's Color: White

of colors: 1 Colors

Color Table (DMC)

Cross Stitch

 310 (17857 ct)